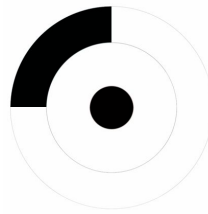




The Future is Carbon

# The Odyssey Range

Carbon Fibre,  
Advanced Composite  
Technology,  
Poly Alloy Architecture



## Arc

Showing little, if any mercy to convention, the engineering prowess of the Arc redefined the stand mounted loudspeaker. Millions of carbon fibres are juxtaposed with precision extruded alloy sections, achieving an attractive but highly functional form. Driven by function like all good design,

This design could lay claim to numerous achievements but without doubt its versatility and industry standard signal to noise ratio are beyond question. It is a great communicator, taking any type of program and reproducing it in the most sincere way, according to the quality of the recording.



## Discovery *isobaric inside*

Conceptually unique, this virtual point source, full range loudspeaker, has been precisely optimised, to extract the absolute maximum from the smallest enclosure. Its electrostatic qualities are underpinned by lightning fast dynamics, that leave the listener with nothing but effortless sound.

A visually striking design, it is instilled with timeless qualities that defy convention. The design is quite simply beyond categorisation. Yet, it achieves this without vulgar over statement or trivial additions.

Acoustically its principle achievement is the staggering depth of field and vast soundstage. The Discovery is the Harry Houdini of loudspeakers, disappearing as it so easily does without a trace.





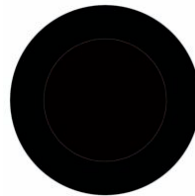
## Curve

phase pure 2.5 way

A floor standing design of impeccable credentials, Within its tiny foot print, is a volume of air that enables the Tactic drive units to respond like only floorstanders can, but unlike conventional floorstanding designs, there is a complete absence of cabinet noise.

The fine lines are punctuated by precision Wilson Benesch engineered functional accents that convey a sense of determined, obstinate, solidity when it comes to unwanted resonances.

Acoustically the design is clean, precise and highly communicative, giving a little more to bass energy than the A.C.T. design, pictured below, from which it borrows so very much.

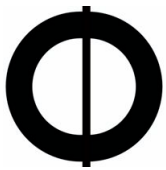
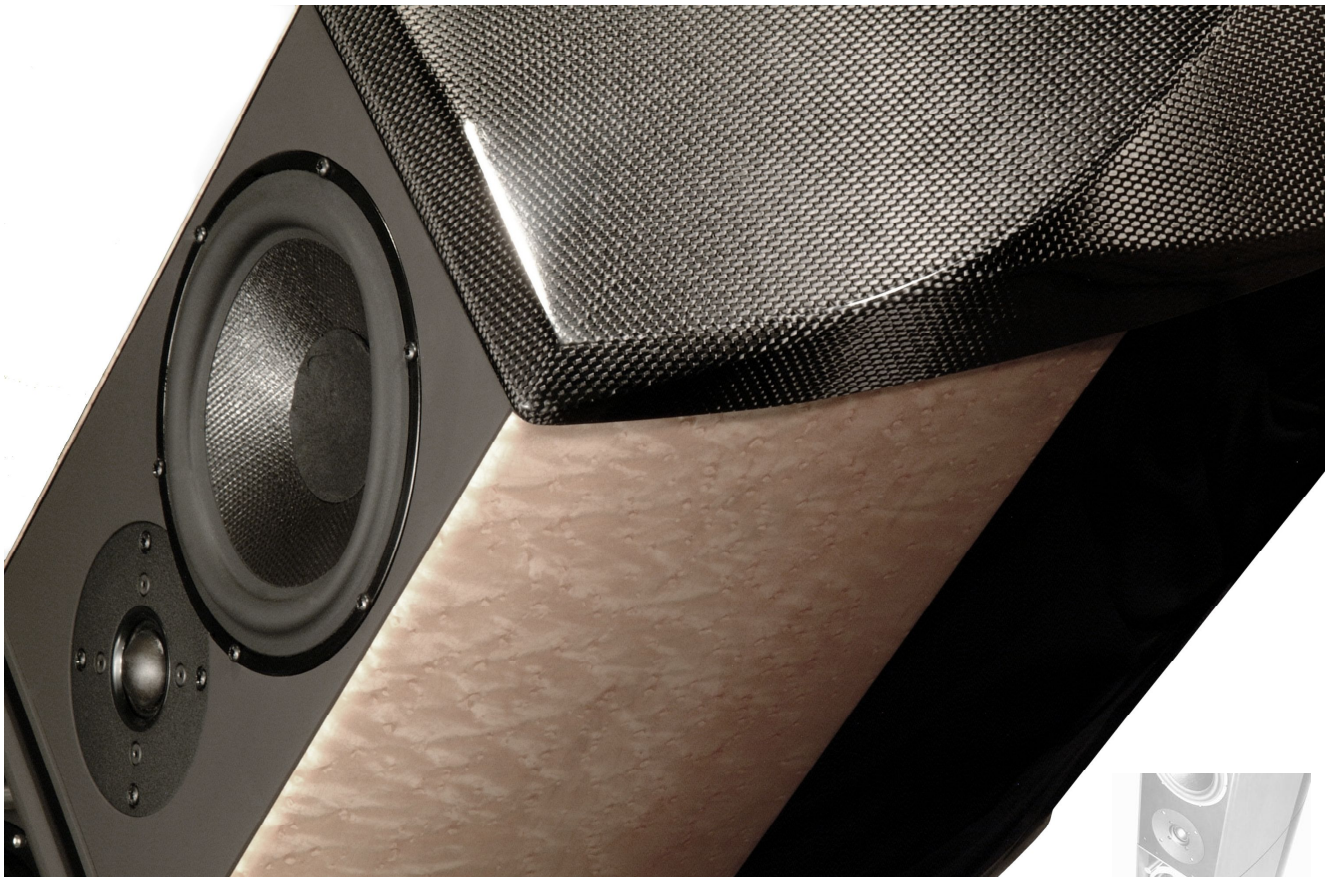


A.C.T. phase pure 2.5 way

Balance is a critical factor in all good design and in the A.C.T. there is no finer balance. The cabinet is assembled, as you would expect from a Wilson Benesch loudspeaker, by hand from materials technologies that you would commonly see in Formula One race cars or advanced fighter aircraft. They represent the most advanced cabinet structures ever created by a loudspeaker company and are quite unique.

Acoustically, the A.C.T. is capable of communicating the finest nuances of the event. It achieves this without addition or embellishment of any kind. It is a sense of naturalness, that is perhaps the greatest strength of this time honored design. Few if any have stood this most demanding test.

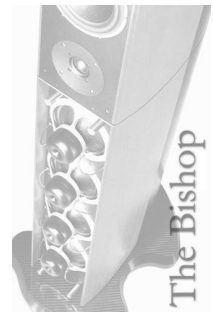




## Chimera

*isobaric inside*

phase pure 2.5 way



A floor standing design that finds itself deployed across the world in some of the most demanding music rooms. The Chimera exudes quality on every level. It is assembled from elements that require many days of hand work before they are even ready for assembly. Of course it would not be a Wilson Benesch if it were not highly innovative and somewhat unconventional. The differences are considerable, and reflect perhaps most clearly the achievements that flowed from the D.T.I. (Department of Trade & Industry) funded Bishop research Project. This empowers the Chimera, setting the highest standard in low frequency dynamics, that exceed those of the super fast Tactic mid range unit! No other loudspeaker can make such a claim. A unique development path.



## Centre

phase pure 2.5 way

The most versatile of all Wilson Benesch loudspeakers, the Centre is an extremely powerful compact and of course visually discrete design. When asked to do so, it will relish a fire fight or atomic explosion and in the next breath deliver the most subtle expressions of an Ennio Morricone soundtrack. Like all Wilson Benesch designs its main strength is the sound field that extends well beyond the constraints of its super rigid enclosure. Add to this the sweet un-fatiguing high frequency and seamless integration across an extra ordinary bandwidth and you have a giant killing package.

